

2020-2021 Annual Report



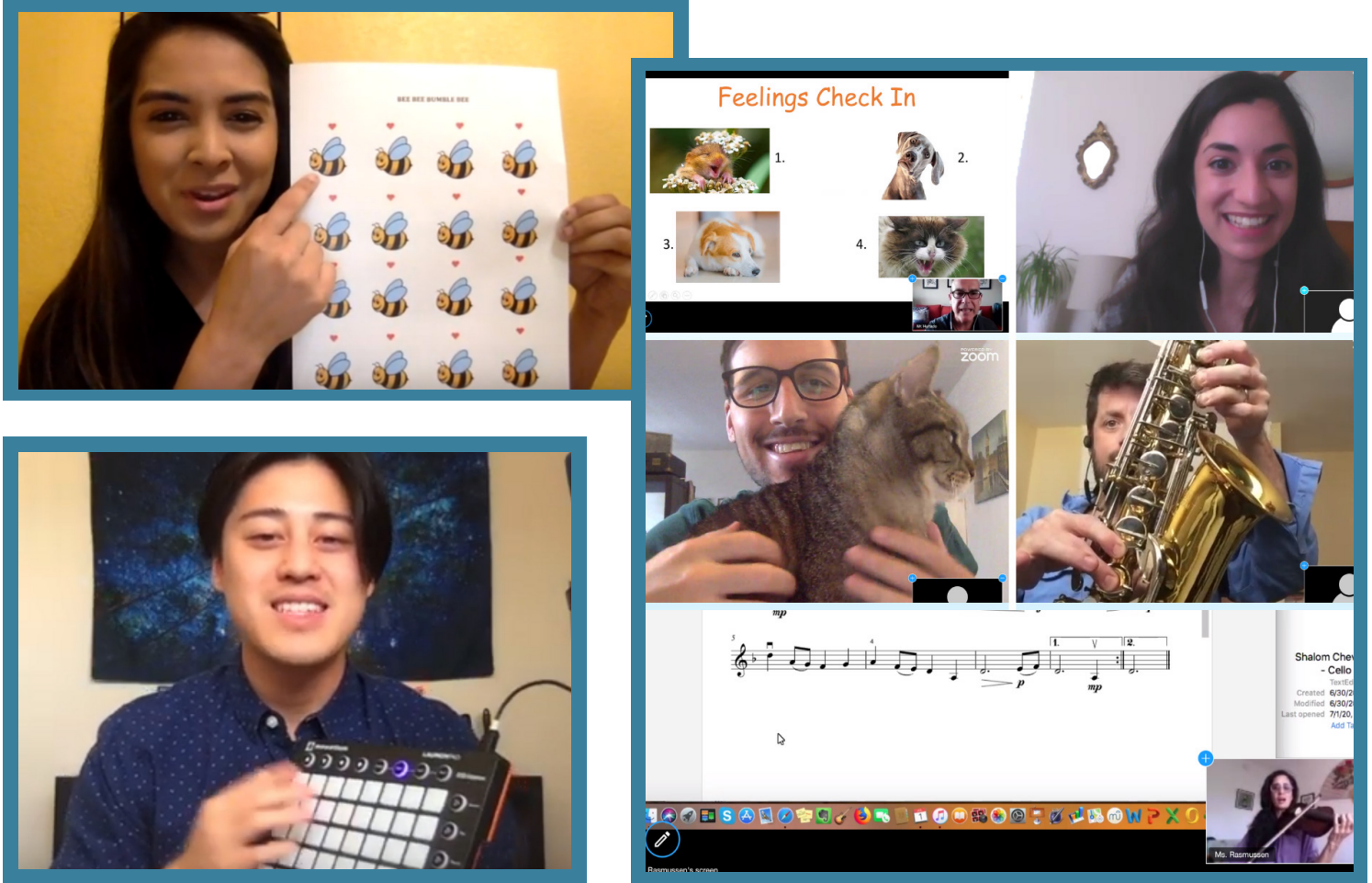
A Commitment to Our Mission



Education Through Music-Los Angeles partners with under-resourced schools with the mission to provide and promote music as a part of the core curriculum for every child to enhance students' academic achievement, creativity and overall development.

As our world continues to deal with the effects of COVID-19, all of us at ETM-LA extend our love to you and to our students, partners, supporters, and community members. Despite any challenges, we remain resolute to ensure that all children, especially those in under-resourced schools, receive quality music education and its inherent benefits of joy, motivation, and connectedness. We remain responsive to the needs of our community and strive towards a goal of equity and social justice through music. Music and learning have the capacity to drive personal, social, cultural, physiological, intellectual, or emotional transformation, enabling the discovery of one own's voice and unique journey.

Virtual Music Education Programs



Education Through Music-Los Angeles (ETM-LA) integrated its in-school music programs for under-resourced and historically marginalized communities with the mission to provide and promote the implementation of music into the curriculum of our partner schools in order to enhance students' academic performance, self-confidence, creativity, and general development. This year, our faculty utilized virtual and distance learning to keep the music playing in our classrooms.

ETM-LA provides each of our partner schools with a 45-minute weekly music class on a year-long basis. These classes provide an assortment of musical disciplines including violin, ukulele, guitar, recorder, general music, music technology, and chorus. The programs at each school are tailored to meet the needs of each respective population based on the vision of the school's principal, with the guidance of an ETM-LA consultant or mentor. Students at all partner schools performed in two virtual concerts to showcase their musical learning in the fall and spring semesters.

Our Partner Schools

46 Schools
19,000 Students

54th St. Elementary (Since '18)
Aldama Elementary (Since '18)
Aragon Elementary (Since '18)
Ascot Elementary (Since '19)
Bennett-Kew Elementary (Since '19)
Bursch Elementary (Since '18)
Cantara Elementary (Since '19)
Carver Elementary (Since '20)
Castelar Elementary (Since '07)
Centinela Elementary (Since '20)
Craig Williams Elementary (Since '19)
Dickison Elementary (Since '20)
Dolores Mission School (Since '16)
Dorris Place Elementary (Since '12)
El Dorado Avenue Elementary (Since '07)
Elysian Heights Elementary (Since '18)
Ernie Pyle Elementary (Since '19)
Foster Elementary (Since '11)
Frank D. Parent Elementary (Since '18)
Guardian Angel Catholic School (Since '13)
Highland Elementary (Since '20)
Hooper Ave. Elementary (Since '15)
Hudnall Elementary (Since '20)
ICEF Innovation LA (Since '19)
ICEF Vista Middle School (Since '19)
ICEF Vista Primary Academy (Since '15)

Ingenium Charter Canoga Park (Since '17)
Kelso Elementary (Since '18)
Kennedy Elementary (Since '19)
La Tijera Academy of Excellence (Since '20)
LA Leadership Academy Middle (Since '19)
LA Leadership Academy Primary (Since '19)
McKinley Elementary [Burbank] (Since '15)
McKinley Elementary [Compton] (Since '15)
Norwood Street Elementary (Since '10)
Oak Street Elementary (Since '19)
Our Lady of the Holy Rosary School (Since '12)
Payne P-8 STEAM Academy (Since '19)
Providencia Elementary (Since '11)
Resurrection Catholic School (Since '14)
St. Francis X. Cabrini Catholic School (Since '20)
St. Michael's Catholic School (Since '17)
Toluca Lake Elementary (Since '20)
Washington Elementary (Since '13)
Worthington Elementary (Since '18)
Woodworth-Monroe K-8 Academy (Since '20)
Rio Vista Elementary* (Since '08)
Roosevelt Elementary* (Since '13)
West Hollywood Elementary* (Since '10)

* = Consultant Schools

Professional Development



Dr. Scott N. Edgar



Dr. Loneka Battiste



Summer Training
Institute

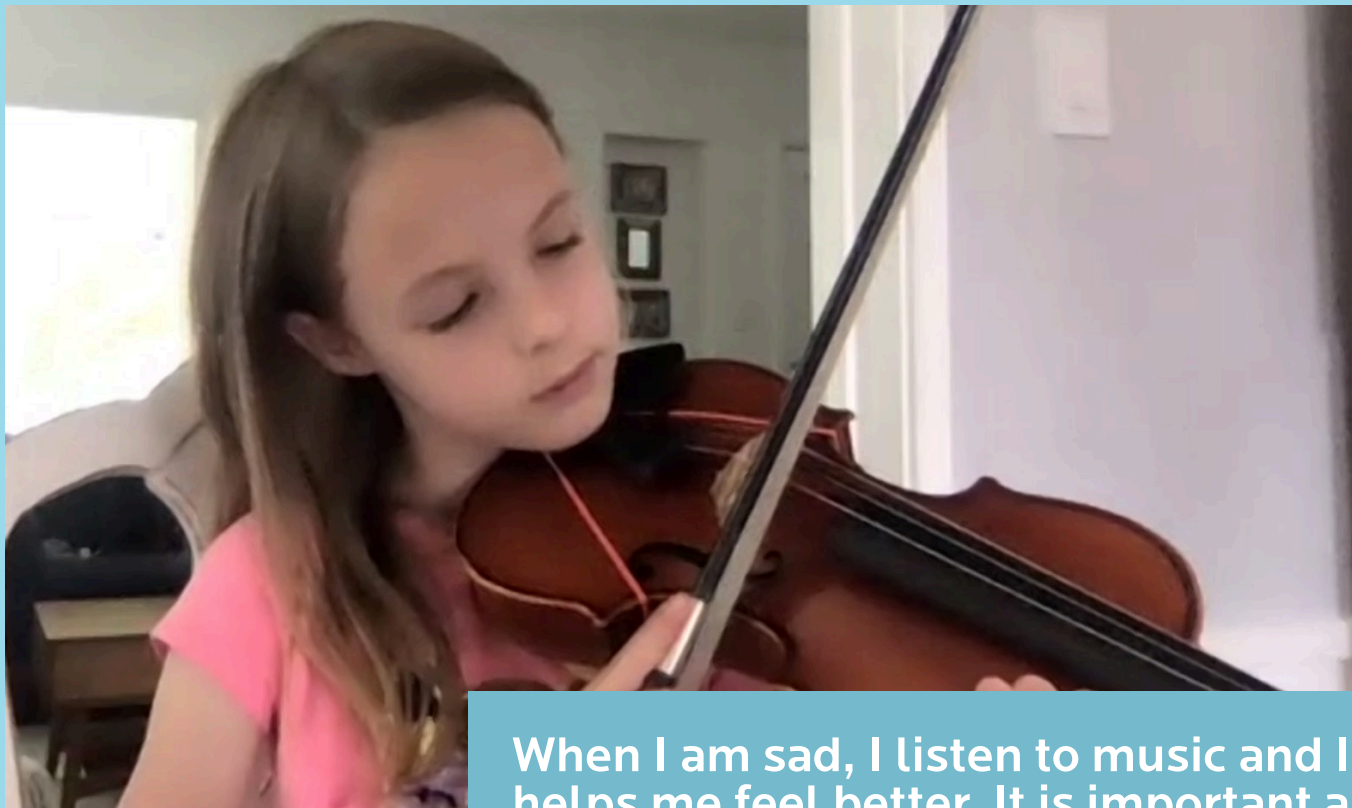


Dr. Jacqueline Sanderlin

To prepare for a virtual semester, our dedicated teachers and guests came together online for ETM-LA's intensive week-long **Summer Training Institute**. They explored culturally relevant and diverse strategies for teaching music in under-resourced communities, best practices in virtual classroom management and procedures, student engagement, curriculum design, and more.

In another virtual seminar, teachers explored cultural equity in the classroom with speaker **Dr. Loneka Battiste** (Assistant Professor of Music Education, University of Tennessee – Knoxville). Dr. Battiste encouraged participants to “acknowledge ethnic and cultural diversity in music instruction” through: using music familiar to students to reinforce concepts, connecting the music of community musicians to musical concepts addressed in class, inviting culture bearers into the classroom, and incorporating aural music learning as a strategy.

In March, principals, district leaders, and advocates gathered virtually for ETM-LA's 12th Annual Principals Leadership Conference, led by ETM-LA staff and special guests. The current state of music and arts education, an exploration of how to advocate for music education, and establishing sequential music instruction as a core subject were among topics discussed. **Dr. Scott N. Edgar** (Music Education and Social Emotional Learning: The Heart of Teaching Music) and **Dr. Jacqueline Sanderlin** (Author, *The Why Not Challenge*; Thought Leader, Educator, Apple) were present as guest speakers, offering key tools to help leaders more deeply research, reflect upon, and discover ways to further ensure that their approach stays responsive to their communities.



When I am sad, I listen to music and It helps me feel better. It is important and it has helped people's lives and feelings. It has been so important to us and we all love music. It has made the world more expressive. It has made it better.

- John, ETM-LA student



Year In Review

SEPTEMBER 15 - Kicking Off ETM-LA's 15th Year

Our dedicated teachers explored culturally relevant and diverse strategies for teaching music in under-resourced communities, best practices in virtual classroom management and procedures, student engagement, curriculum design, and more.

OCTOBER 23 - Celebrating Dia De Muertos

Composer Germaine Franco talked with our families about the music from *Coco*. ETM-LA's second At-Home Series featured virtual performances that showcased *Coco*'s most popular songs.

(see page 10 for further details)

FEBRUARY 27 - Culturally Responsive Teaching

A virtual training session was held for teachers, with a focus on Latin American music and culture. Program staff dove deep on how to embrace a culturally responsive teaching approach; nurturing the student community, opening opportunities for deeper learning, establishing alliances, and shifting one's academic mindset were among several topics explored.

(see page 4 for further details)

MAY 14 - ETM-LA Receives NEA Grant

ETM-LA was awarded a Grants for Arts Projects award to support its Core Curriculum Music Education Program by the National Endowment for the Arts, which provided a solution to meet the need for quality arts education in low-income area schools, helping generate systemic change to close the achievement gap.

JUNE 21 - Summer Music Camp in Full Swing

In June, over 100 students from ETM-LA partner schools enrolled in the Virtual Summer Program. With mental health and wellness as a priority, each day began with a music therapy session led by Music Teacher & Therapy Specialist Ricardo Hurtado. Jazz & Blues lessons focused on improvisation, vocal scatting, jazz artists/instruments, and song structure.

SEPTEMBER 29 - At-Home Family Hour Series Debuts

ETM-LA students and families participated in a live virtual session about the Amazon Original Series *Pete the Cat!* Drawing lessons, musical performances, and a peek into the creative process behind the making of the show were featured.

(see page 9 for further details)

JANUARY 28 - ETM-LA 15th Year Celebration Benefit

Our supporters from the music, film, business, and education communities gathered virtually to support music education and pay tribute to three Shining Star Honorees.

(see page 8 for further details)



APRIL 1 - Disney *Frozen* Artists Draw with Students

Animators and composers behind Disney's *Frozen* and *Frozen II* participated in ETM-LA's At-Home Family Hour Series. Partner school students and families enjoyed this special virtual event that gave a behind-the-scenes look into the creative process for each film.

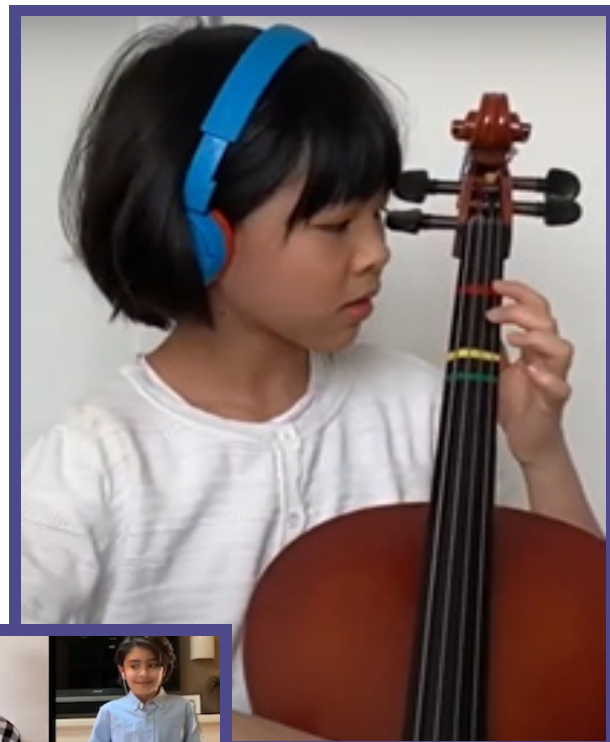
(see page 10 for further details)

MAY 21 - An Inside Look into *Raya and The Last Dragon*

The At-Home Family Hour Series continued with the musical and visual artists behind Disney's *Raya & The Last Dragon* in celebration of Asian American and Pacific Islander Heritage Month.

(see page 9 for further details)

Music Unites The World Festival



This year's Music Unites The World Festival was virtually premiered on May 13th and hosted by Emmy-Winning Music Director **Rickey Minor** (*American Idol*, Stevie Wonder), with encore performances on the 15th and 23rd. Festival highlights included interactive music activities such as Afro-Cuban percussion led by **Kevin Ricard** (Stevie Wonder, Lionel Richie, Bette Midler), Call & Response songs with Artist/Composer **Siddhartha Khosla** (*This is Us*, Goldspot) and Black American Sign Language to the classic song "Lean on Me," led by ETM-LA Music Educator **Kimberly Cox Johnson**. Attendees also enjoyed performances by the **INCA Peruvian Ensemble** (The Music Center), as well as by ETM-LA's virtual choir, strings, and band. This family-friendly virtual event united communities from across Los Angeles and beyond through music and the exploration of diverse artists and cultures.

15th Annual

Benefit Celebration

15th YEAR
Celebration
BENEFIT

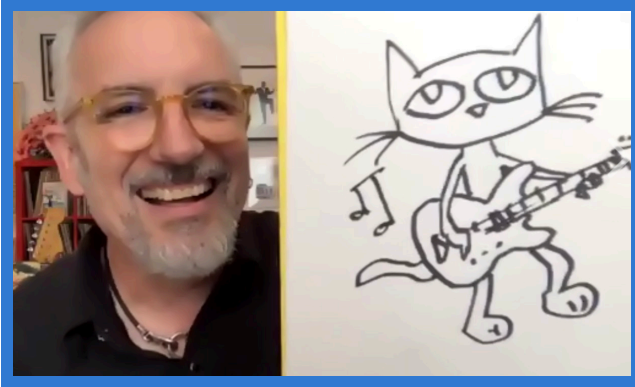


On January 28 2021, Education Through Music held a virtual celebration to commemorate its 15th Annual Benefit Event. Academy Award-Winning Composer and Songwriter **Alan Menken** (*Beauty & the Beast*, *The Little Mermaid*), ETM-LA Board Chair **Booker White / BTW Productions** (Supervisor of Music Prep., Dir. of Music Library – Walt Disney Pictures & Television), and Music Educator **Manuel Castañeda** (Centennial High School, Compton) were honored and recognized as Shining Star Honorees for their influence in music education. Menken reflected, ‘We are all conduits to music... we don’t own it, it comes through us. And that ability to take it in and have it come through us is what music education is all about.’



The evening was hosted by Actress/Singer-Songwriter **Karen David** (*Galavant*, *Once Upon a Time*) and Academy Award-Winning Composer **Michael Giacchino**. Disney Legend **Jodi Benson** (Voice of Ariel, *The Little Mermaid*), singer **Anthony Evans** (*Beauty & The Beast*, Billboard #1 Gospel Artist), and Alan Menken led attendees in a Disney Sing-Along to such songs as “Go the Distance”, “Friend Like Me”, and “Part of Your World”. ETM-LA students and alumni gave their own special performance of “Seize the Day”.

Guest Artists



During ETM-LA's first At-Home Family Hour Series, Executive Producer/Artist **Jeff "Swampy" Marsh** (*Phineas & Ferb*, *Milo Murphy's Law*, *The Simpsons*) demonstrated how to draw Pete from Amazon Studio's **Pete the Cat** and encouraged the audience to draw along with him. He explained not to worry about making a "perfect picture" – it is about perseverance. "Every artist has one thousand drawings in them... your job is to get them out as quickly as possible." Marsh revealed that his ultimate job is story-telling and that "music at its peak is telling a story."

Grammy Award-Winning Singer-Songwriter and the voice of Pete's Mom and Catalina Casesolver, **KT Tunstall**, performed her song CatGo and the Nine Lives. Her character fittingly plays electric guitar and leads the show's rock band, and Tunstall jokingly compared recording Catalina's songs in-studio with a live band to being in The Ramones.



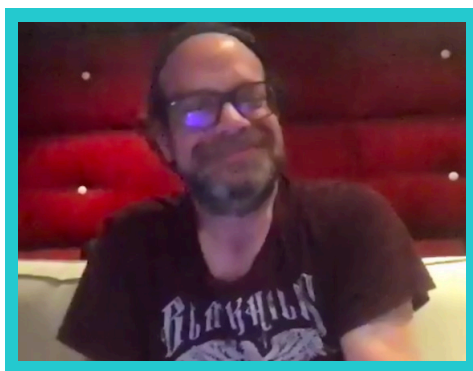
At ETM-LA's Spring At-Home Family Hour Series, animators from **Raya & The Last Dragon** taught students how to draw the film's most popular characters. **Amy Smeed** (Co-Head, Disney Animation) and **Fawn Veerasunthorn** (Disney Head of Story, *Raya & The Last Dragon*) introduced the storyboard-ing process to students, explaining how animators used visuals of each scene to bring the characters to life. Veerasunthorn said that Raya is a strong female character and shared that many artists listen to the film's score as they work for inspiration.

Vitor Vilela (Supervising Animator, *Raya & The Last Dragon*) shared that the animators use methods like "acting movements out" on video to help them find inspiration for each character's visual performance. Vilela, who studied classical guitar and plays in a band with fellow Disney animators, talked about the parallels between music and animation: "Animation is a musical way to bring images to life."

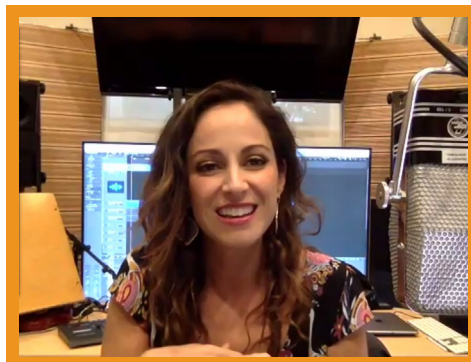
Global Musical Artist **Pedro Eustache**, who played woodwinds on James Newton Howard's film score to *Raya*, demonstrated numerous Asian flutes from such countries as China and Mongolia. Eustache showed students his handmade mouthpieces which he combined with his standard flute to widen the range of notes. He also demonstrated the interdental technique, for which the flute is played between teeth while singing at the same time.



This virtual event featured drawing lessons for **Frozen** and **Frozen II** characters Olaf, Anna, and Elsa from several Disney animators. **Wayne Unten** (Supervising Animator – *Frozen II*, *Wreck-It Ralph*, *Tangled*) shared that Elsa’s magical movements were inspired by modern dance, specifically by choreographer Martha Graham. For Anna, Supervising Animator **Hyun-Min Lee** (*Frozen II*, *Raya and the Last Dragon*, *Moana*) shared that emotions were portrayed mainly through her eyebrows, later demonstrating this in a drawing breakout lesson. **Trent Correy**, the main supervising animator for Olaf, gave students advice on their drawings, commenting that Olaf “always looks to the positive side of life” and has a “ready to hug” pose.



Special guest **Christophe Beck** (Emmy-Winning Film/TV Composer – *Frozen*, *Frozen II*, *WandaVision* & ETM-LA Advisory Board Member) discussed the relationship between music and animation with students. Beck described how he matches the action and emotions of animated scenes through his compositions, and shared his “favorite tricks” when creating specific melodies for each of the characters. Actor **Josh Gad** (voice of Olaf) also made a surprise appearance! Students displayed drawings of Olaf they had made during the session for Gad to comment on and admire. He encouraged them to keep practicing, reminding them that it’s “...a lot of hard work, but you’re already getting a head start!”



Germaine Franco shared a behind the scene’s look at the music from Disney Pixar’s **Coco**. Franco shared her inspiration for the music throughout the movie and encouraged the kids to “be grateful to your family and teachers and people who are supporting you. Remember you have a community of people supporting you.” **Federico Ramos**, who was the guitarist for main character Miguel, performed “Remember Me” and expressed his love for the movie and the thoughtful approach for the music. During the Q&A, he shared that “the greatness of other players/singers/composers” inspired him when he began playing guitar at 14 years old. Singer and Actress **Holly Sedillos** also attended, and shared how important music was in her life as a student. She urged the kids that music is “a gift that you’re giving to other people. People need music.”

Statement of Position

ASSETS

Current assets

Cash and cash equivalents	\$ 1,702,242
Accounts receivable	52,730
Prepaid expenses and other current assets	<u>14,422</u>

Total current assets 1,769,394

Depreciable assets, net 64,159

Total assets **\$ 1,833,553**

LIABILITIES AND NET ASSETS

Current liabilities

Accounts payable	\$ 16,703
Accrued compensation	114,752
Unearned income	51,834
Other accrued liabilities	29,154
Grant advance – Paycheck Protection Program	<u>371,472</u>

Total liabilities 583,915

Net assets

Without donor restrictions:

Board-designated reserve – risk capital	346,026
Board-designated reserve – sustainability	464,702
Other net assets without donor restrictions	<u>437,394</u>

1,248,122

With donor restrictions 1,516

Total net assets 1,249,638

Total liabilities and net assets **\$ 1,833,553**

Statement of Activity

	Without Donor Restrictions	With Donor Restrictions	Total
REVENUE, GAINS, AND OTHER SUPPORT			
Public support:			
Contributions	\$ 916,738	\$ 1,516	\$ 918,254
Government grants	507,788	--	507,788
Special events revenues, net	136,012	--	136,012
In-kind contributions	43,721	--	43,721
Net assets released from restrictions:			
Satisfaction of purpose restrictions	<u>54,900</u>	<u>(54,900)</u>	--
Total public support	1,659,159	(53,384)	1,605,775
Program fees	1,131,118	--	1,131,118
Other income	<u>9,689</u>	--	<u>9,689</u>
Total public support and revenue	<u>2,799,966</u>	<u>(53,384)</u>	<u>2,746,582</u>
EXPENSES			
Program services	2,120,111	--	2,120,111
Management and general	146,780	--	146,780
Fundraising	<u>245,146</u>	--	<u>245,146</u>
Total expenses	<u>2,512,037</u>	--	<u>2,512,037</u>
Change in net assets	287,929	(53,384)	234,545
NET ASSETS, beginning	<u>960,193</u>	<u>54,900</u>	<u>1,015,093</u>
NET ASSETS, ending	<u>\$ 1,248,122</u>	<u>\$ 1,516</u>	<u>\$ 1,249,638</u>

Statement of Cash Flow

CASH FLOWS FROM OPERATING ACTIVITIES

Change in net assets	\$ 234,545
Adjustments to reconcile change in net assets to net cash provided by operating activities:	
Depreciation and amortization	16,564
Change in assets and liabilities:	
Grants and pledges receivable	123,585
Accounts receivable	(31,281)
Prepaid expenses and other assets	(3,461)
Accounts payable	(6,359)
Grant advance – Paycheck Protection Program, second draw	371,472
Use of grant proceeds, Paycheck Protection Program, first draw	(371,473)
Unearned income	4,334
Accrued compensation	32,360
Other accruals	<u>29,154</u>
Net cash provided by operating activities	<u>399,440</u>

CASH FLOWS USED BY INVESTING ACTIVITIES

Acquisition of fixed assets	<u>(990)</u>
Net increase in cash and cash equivalents	398,450

CASH AND CASH EQUIVALENTS , beginning of year	<u>1,303,792</u>
--	------------------

CASH AND CASH EQUIVALENTS , end of year	<u>\$ 1,702,242</u>
--	----------------------------

Sources of Income

Contributions

(Individual, Corporate, Foundation, and Board)

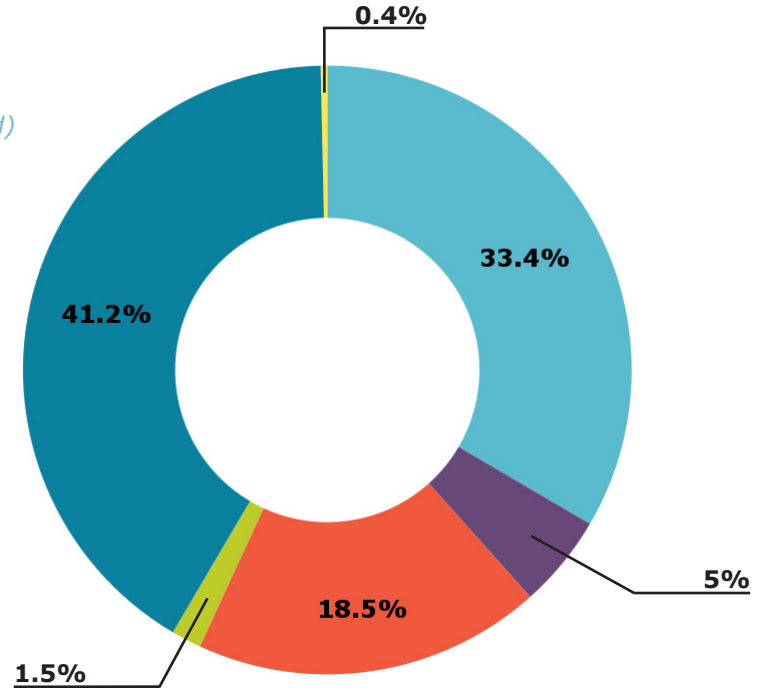
Special Events

Government Grants

In-Kind Contributions

Program Fees

Other Income

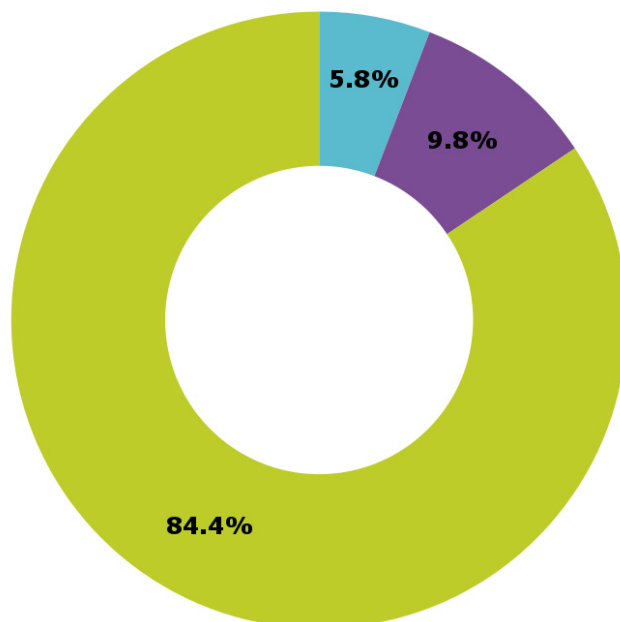


Expenses

Management and General

Fundraising

Program Services



Thank you to our donors, staff, volunteers, partner schools, academic leaders, communities, and parents for helping to provide our children with a comprehensive education and establish music as part of the core curriculum.

Board of Directors

Booker White

Chair

Patrick S. Cole

Chair Emeritus

Lisa Norton

Vice Chair

Nancy Smith

Secretary

Jeff Scofield

Treasurer

Ingrid Burger

Tim Davies

Lola Debney

Julianne Jordan

John Dennis

Michael Gorfaine

Gregory L. Gutierrez

Larry Kohorn

Yukiko Kojima

Victoria Lanier

Christopher Lennertz

Rachel Modahl

Linda Mouradian

Blake Neely

Matthew White

Austin Wintory

Ray Yee

Advisory Board

Ayke Agus

John Avila

Christophe Beck

Joshua Bell

Leni Boorstin

James Dooley

Kerry Farrell

Jesus Florido

Michael Giacchino

Susan Helfter

Ed Helms

Yeou-Cheng Ma

Rickey Minor

Angelica Loa Perez

Misha Piatigorsky

Richard M. Sherman

Randy Spendlove

Ben Vereen

Eric Whitacre

Anthony White

Christopher Young

Jeremy Zhu

Daniel Catan, *In Memoriam*

Associates Board

Jonathan Beard

Cathleen Cher

Steve Dress

Kristina Groennings

Associates Board *Continued*

Allegra Gutierrez

Susan Gutierrez

Katia Karpenko

Ronen Landa

Sherman Lau

Melissa Lerner

Madeline Myers

Ashley Olauson

Daryl Synowiec

Angel Velez

Staff

Virginia Angquico

Human Resources Coordinator

Damon Carter

Instructional Supervisor

Christina Flores

Finance Manager

Franklin Gómez

Instructional Supervisor

Jacquie Henderson

Director of Development

Ricardo Hurtado

Music Therapy Specialist & Music Teacher

Tonya Hylton-Campbell

Instructional Supervisor

Ella Jennings

2021 Program & Operations Intern

Victoria Lanier

Executive Director

Christina MacInnes

Admin Assistant

Katharine Moskovciak

Communications Associate

Deidre Racoma

Director of Programs

Olivia Richardson

Program Assistant

Gary Shields

Director of Community Affairs & Partnerships

Kara Temena

2021 Communications Intern

Oliver Trinidad

2020 Program & Operations Intern

Allison Tuthill

Instructional Supervisor & Music Teacher

Alicia Wilson

2020 Communications Intern

Music Teaching Faculty

Ani Avanessian

Lesley Baird

Jaylon Black

Matthew Brundrett

Beth Buehlman

Sean Carney

Kimberly Cox Johnson

Julio De León

Brandon Encinas

Sadoc Garcia

Emilio Gonzalez Al-Ahmar

Music Teaching Faculty *Continued*

Mindy Gustafson

Jennifer Jordan

Ari Kessler

Naju Kim

Arvi Lapuz

Eric Lifland

Dominick Mustacato

Lissie Quishenberry

Nadene Rasmussen

Angelica Rowell

Ryann Schlesinger

Westley Steele

Julia Varady

Wendy Walsh-Canas

Joshua Wen

Charles Wright

Brandon Xue

Foundation & Government Support

ASCAP Foundation, The

BCM Foundation

BMI Foundation

CalASTA-LA

California Arts Council

California Community Foundation

Carl & Roberta Deutsch Foundation, The

City of Los Angeles Department of

Cultural Affairs

Colburn Foundation

D'Addario Foundation, The

Dwight Stuart Youth Fund

Endeavor Foundation

Find Your Light Foundation

Green Foundation, The

Heads Up Youth Foundation

Hennings-Fischer Foundation

Jewish Community Foundation of

Los Angeles

Johnny Carson Foundation

L'Ermitage Foundation

LA Regional COVID-19 Relief Fund

Los Angeles County Department of

Arts and Culture Internship Program

M.S. Grumbacher Foundation, The

Meyer Levy Charitable Fund /

Anne Levy Foundation

Music Man Foundation, The

National Endowment for the Arts

Preston and Maurine Hotchkis Foundation

Ralph M. Parsons Foundation, The

Seattle Foundation, The

Sidney Stern Memorial Trust

Simon-Strauss Foundation, The

Small Business Administration (CARES)

Stockdale Family Foundation

Thelma Pearl Howard Foundation

Venable Foundation



Thank You!

