

Asian American Pacific Islander HERITAGE MONTH

Asian American Pacific Islander Heritage Month was established to recognize the history, culture, traditions and contributions of Asian Americans and Pacific Islanders in the United States. Asian American Pacific Islander Heritage month was established in 1990 to mark the arrival of the first Japanese immigrant to the United States on May 7, 1843, and to honor the contributions of Chinese immigrants to the completion of transcontinental railroad on May 10, 1869.

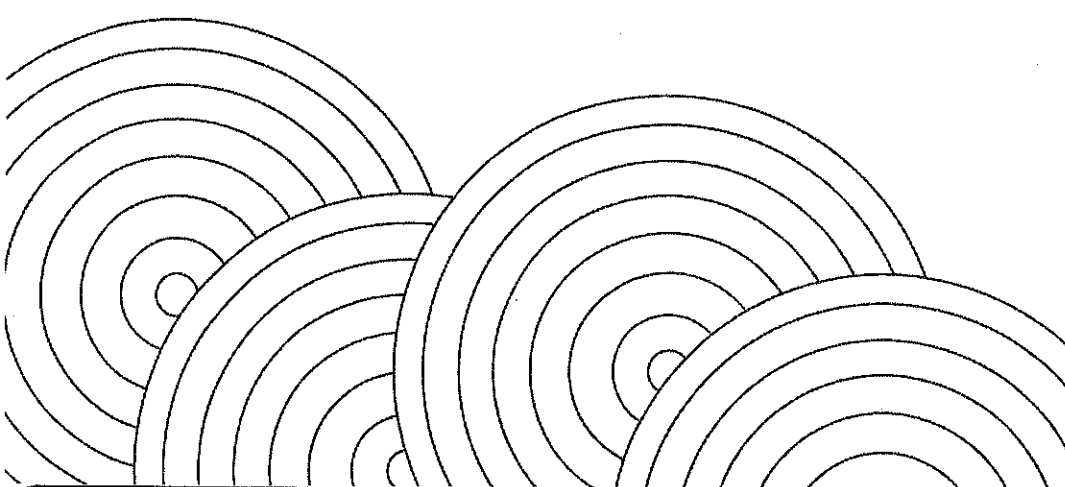
Where are Asian American Pacific Islanders from?

The term Asian American Pacific Islander represents people from the 44 countries in the Far East, Southeast Asia, South Asia, or the Pacific Islands. This area includes, for example:

China	Sri Lanka	Indonesia
Japan	Nepal	Pakistan
Korea	Bhutan	Laos
Philippines	Taiwan	Cambodia
Samoa	Korea	Fiji
India	Vietnam	Guam
Pakistan	Malayasia	Hawaii
Bangladesh	Thailand	Northern Marianas

Historical Events

- The islands of the south Pacific were reached by people sailing or drifting from southeast Asia in a twin-hulled sailing canoe. The first people reached Hawaii in about 400AD.
- 1882 The Chinese Exclusion Act, an immigration law passed, that prevented Chinese laborers from immigrating to the United States. This was the first immigration law that excluded an entire ethnic group and remained in effect until they were repealed in 1943.
- 1942-1946 During World War II President Franklin D. Roosevelt ordered the internment, forced relocation and incarceration, of Japanese Americans. Of the 120,000 people, most of whom lived on the Pacific Coast, 62% of the internees were Nisei (second generation) and Sansei (third generation) Japanese United States citizens.



Who is one Asian American Pacific Islander you know? What do you know about them? _____

How many many countries are represented in Asian American Pacific Islander heritage month? _____

What type of calendar does your family use? _____

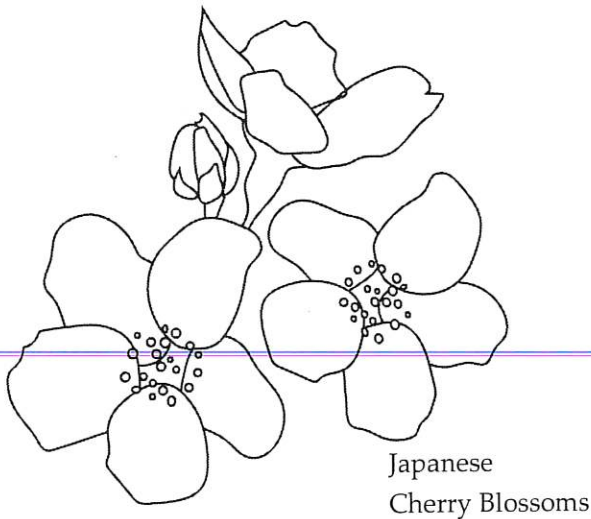
Inventions & Innovations

Lunar Calendar

A lunar calendar is a calendar based upon the monthly cycles of the Moon's phases, in contrast to our calendars which are based on the annual cycles of the sun. Months of a lunar calendar alternate between 29 and 30 days. A lunar year is only 354 days, 8 hours, 48 minutes, 34 seconds.

The Gregorian calendar, or solar calendar system, is in common and legal use in most countries including the United States. While traditional lunar and lunisolar calendars continue to be used throughout the Old World to determine religious festivals and national holidays. Examples of such holidays include:

- Ramadan (Islamic calendar)
- Easter
- Chinese, Japanese, Korean, Vietnamese, and Mongolian New Year
- Nepali New Year (Nepali calendar)
- Mid-Autumn Festival and Chuseok (Chinese and Korean calendars)
- Loi Krathong (Thai calendar)
- Vesak/Buddha's Birthday (Buddhist calendar)
- Diwali (Hindu calendars)
- Rosh Hashanah (Hebrew calendar)



Japanese
Cherry Blossoms

Festivals

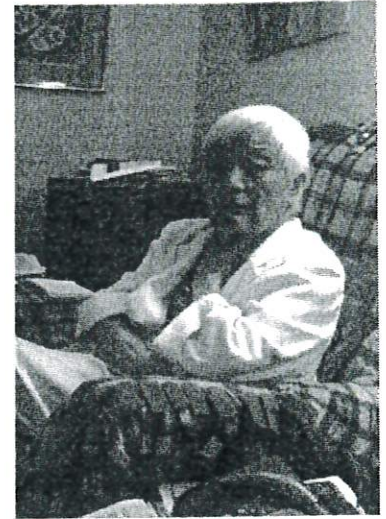
Cherry trees made their way to the United States in 1912 as a gift of friendship to the "People of the United States from the People of Japan". The **Cherry Blossom Festival** is four week long celebration in the spring. The flowering cherry tree, or "Sakura," is a symbol of beauty and fragility of human life, as well as the ongoing friendship between Japan and the United States.



**Queen Liliuokalani —
1838-1917**

Queen Liliuokalani born on Honolulu, was the first queen regnant and the last monarch of the Kingdom of Hawai'i.

The queen was a talented songwriter. She composed more than 160 songs, or mele, during her life. One of her most popular songs "Aloha Oe (Farewell to thee)" has been covered by many.



**Grace Lee Boggs, Ph.D. —
1915-2015)**

First generation Chinese American author, social activist, philosopher and feminist. She is known for her years of political collaboration in the 1940s and 1950s.

She authored 5 books, including an autobiography. She wrote her fifth book, *The Next American Revolution: Sustainable Activism for the Twenty-First Century*, at the age of 95.

NOTABLE ASIAN AMERICANS

Minoru Yamasaki
Jawed Karim
Satya Nadella
Indra Nooyi
Sundar Pichai
Kevin Tsujihara
Yishan Wong
Jerry Yang
Mindy Kaling
George Takei
Bruno Mars
Yo-Yo Ma
David Chang
Fred Korematsu
Amy Tan
Ching W. Tang
Kamala Harris

NOTABLE PACIFIC ISLANDERS

King Kamehameha
Israel Kamakawi'ole
Akebono Taro
Andrew Suniula
Jason Mamoa
Dwayne Johnson
Tiaina "Junior" Seau
Filia (Phil) Uipi
Viliame Niumataiawalu
Manisela Fifita Sitake
Sione Ake Mokofisi
Palatasa Havea
Ray Robson
Eddie Calvo
Esther Cowley-Malcolm
Lani Wendt-Young
John Kneubuhl